

**PHILIPS**

Professional  
Display Solutions

2017

THE  
**FUTURE**  
TECH CO.



Innovations on Display:  
**technology evolves**



# Innovations on Display: **technology evolves**

Philips Professional Display Solutions opens a window of opportunity. We pioneered the video wall in 1984, then changed the way people watch TV with Ambilight. And now, our technology evolves with innovations on display for a wide variety of markets and commercial applications.

## Our innovative solutions will keep leveraging your business

From dynamic signage to informative content and entertainment, our display solutions bring you intuitive access to an ever-expanding array of applications. More and more of our Professional Display Solutions are powered by Android™, and the number keeps growing. And by using our CMND platform, you can control and update displays and content from a central location, saving both time and money.

## Our Professional Display Solutions are tailored to suit many markets

- Hospitality
- Healthcare
- Public venues
- Transportation
- Corporate
- Education
- Retail
- Food & Beverage



**Powered by Android™**  
inspired by interaction

As the world's most developed and widely used operating system (OS), Android is more than just an enabling technology; it's a gateway to interactive simplicity. Our Professional Display Solutions powered by Android give you smarter, faster and more intuitive interaction with content and displays. And when integrated with our CMND platform, you get simplified installation and full control from a central location.

### Guest interaction, **more visual appeal**

You provide hospitality guests with a clean and intuitive user interface. It's also faster when it comes to guest interaction. And you have access to a wide range of Android Apps\* offering dedicated hospitality services.



### Partner interaction, **control all screen aspects**

You can use a native App or a web App\*\* to manage content schedules and play relevant signage messages, as well as manage and monitor the signage infrastructure. Developers can debug their App directly from the display.



### End-user interaction, **maximum ease of use**

Android System-on-Chip (SoC) provides stable and secure 24/7 operation. It also facilitates low cost integration for existing third-party signage solutions, and is easy to use.

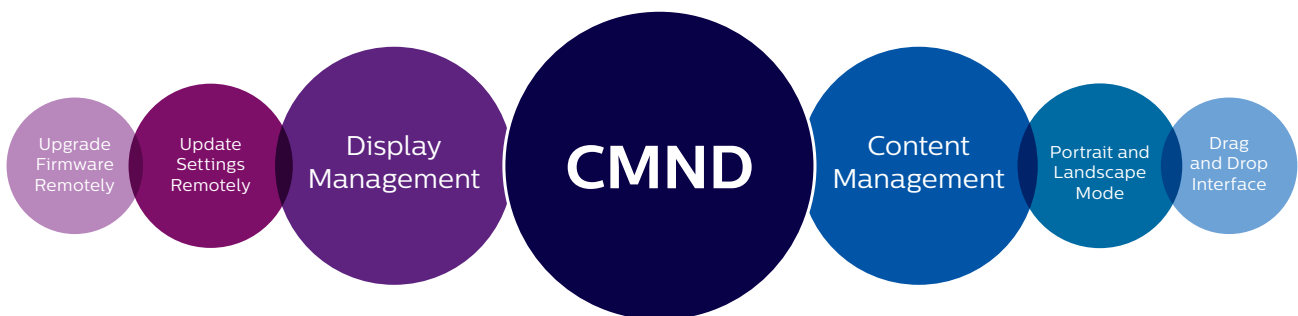
\* The Android robot is reproduced or modified from work created and shared by Google and used according to terms described in the Creative Commons 3.0 Attribution License

\*\* Separate APK Installation, Google Play store unavailable.



# Manage from a central location

Whether you have one display or a thousand, CMND lets you can manage the full suite from one central location. It's robust display management platform puts you in command of settings, scheduling firmware and software updates, and publishing and updating content. All with drag-and-drop ease.



\* Some features are not supported on all devices.



## A seamless, end-to-end display management platform

CMND is an end-to-end solution that works seamlessly across all your connected professional display solutions. You get total control over how content is displayed. On selected displays, it has full-HD resolution and shows content in both portrait and landscape mode.

## Reduce the total cost of ownership

Using just one interface to control all your displays means no time-consuming manual display-to-display updates are required. And the easy, intuitive way it lets you create and publish content in real time boosts the efficiency of your display management processes. The net result is a lower total cost of ownership.

## Display management with CMND&Control

CMND&Control updates and controls settings, software and content for all your displays from one central location. Updates can be scheduled or implemented in real time. This module also manages RF and IPTV channels via RF coaxial and IP networks.

## Content management with CMND&Create

CMND&Create gives you central control over what, how and when content is displayed. You can create interactive content using predefined templates supplied with the module. It lets you create content in either portrait and landscape mode using an intuitive user interface, and features drag-and-drop widgets, video and image playback, and scheduling for content publication. This module also adds RSS feeds, weather, ads and other automatically updating elements.

# Public venues

Wherever large numbers of people are constantly coming and going, there's a need to entertain and inform them. Our Professional Displays do this effectively while providing you with opportunities to generate additional advertising revenue.

## The easy choice with digital menu boards

You can schedule how, when and what content is displayed in portrait or landscape mode thanks to centralized content creation and management with CMND&Create. View our displays from almost any angle thanks to their extra wide viewing angle of 178 degrees. Even in remote or complex locations, signage networks can easily be created using machine-to-machine communication with the 4G/LTE network option. The Android powered D-line and P-Line also offer affordable and easy integration possibilities with third party signage solutions, and a stable and secure 24/7 operation.

## Generate extra revenue with advertising and promotion

Advertising and promotion displayed on our ultra-narrow bezel, high brightness X-Line video wall is a great way to grab attention and generate revenue. Your visitors enjoy remarkably crisp images and vivid colors thanks to the color accuracy and consistent brightness of our IPS displays. And the failover functionality available on most of our signage solutions ensures content runs 24/7 by automatically playing content from another input if the main media player fails.

## A welcoming desk with news and information

Impress and inform your visitors with a Signature TVs with Ambilight placed above your welcome desk. It's perfect for showing the latest news and informing people about your company.

## Live broadcasts to entertain visitors

MediaSuite and Signature, powered by Android provide a future-proof way to entertain visitors with live broadcasts. They're HEVC compatible and can receive TV broadcast via an IP network, thus eliminating the need for a set-top box.

## Help visitors find the way

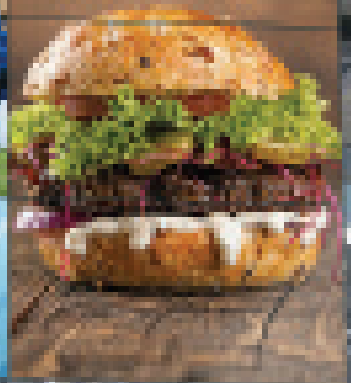
Multi-Touch T-Line displays provide guests with easy access to useful information like route maps, recreational possibilities and meeting schedules. The displays open up the world of Android Apps, and safety is not an issue thanks to their anti-reflective, anti-glare security glass.





TRY OUR  
HOMESTYLE:  
HAMBURGERS

THE BEST  
IN TOWN



## Departures (2/4)

Vienna	11:01 AM	On time
Abu Dabi	11:08 AM	On time
London	11:11 AM	Cancelled
Venice	11:22 AM	On time
Rome	11:40 AM	Cancelled
Berlin	11:49 AM	On time

MONDAY  
26°C  
TUESDAY 27°C  
WEDNESDAY 27°C  
THURSDAY 27°C  
FRIDAY 27°C  
SATURDAY 27°C  
SUNDAY 27°C



**FLY**  
TO THE OTHER SIDE  
OF THE WORLD

TERRIFIC AIRWAYS. TRAVEL IN STYLE.

# Transportation

Professional Displays give travelers passing through airports, train stations and bus terminals fast access to information about departure and arrival times, and timetable changes. People also need to find their way around the location, and providing real-time information and entertainment in departure areas makes waiting more enjoyable.

## Be on time with information boards

Messages get noticed with the high brightness P-Line displays, powered by Android. Whether its arrival and departure times, sponsored advertisements and promotions or emergency messages, the CMND platform lets you control all information from a central location. The failover functionality available on most of our displays ensures content runs 24/7 by automatically playing content from another input if the main media player fails. Even in remote or complex locations, you can easily create signage networks using machine-to-machine communication with the 4G/LTE network option.

## Make choosing easier with digital menu boards

Provide high-quality images of available refreshments in portrait or landscape mode. Travelers can view the Professional Displays from almost any angle thanks to extra wide viewing angles of 178 degrees in both horizontal and vertical planes. And the failover functionality available on most of our displays ensures content runs 24/7 by automatically playing content from another input if the main media player fails. The Android powered D-line and P-Line also offer affordable and easy integration possibilities with third party signage solutions, and a stable and secure 24/7 operation.

## Help travelers find the way

Help travelers get to their destinations by providing route maps and information about taxis, public transport, and recreational options in the area. Our T-line displays have multiple simultaneous touch points and open up the world of Android Apps, and safety is not an issue with the T-Line, thanks to their anti-reflective, anti-glare security glass.

# Corporate

In the corporate world, Professional Displays are ideal for informing employees and visitors alike. Use them for presenting company news in reception, video conferencing in meeting rooms, video walls for dynamic interiors and for real-time production data on the factory floor.

## Impress visitors when they enter reception

Impress and inform your visitors with a QL Series Display with Ambilight placed above your reception. It's perfect for showing the latest news and informing people about your company.

---

## Videoconferencing in meeting rooms

Videoconferencing using the displays with failover functionality ensures content stays up and running. With QuadViewer you can simultaneously play content from four separate Full-HD inputs or play content in 4K Ultra-HD quality. Access to multiple meeting rooms is easily managed using a T-Line display at the entry door showing the room name, meeting topic, organizer and occupancy using colored LED bars.

## Seamless video wall in control rooms

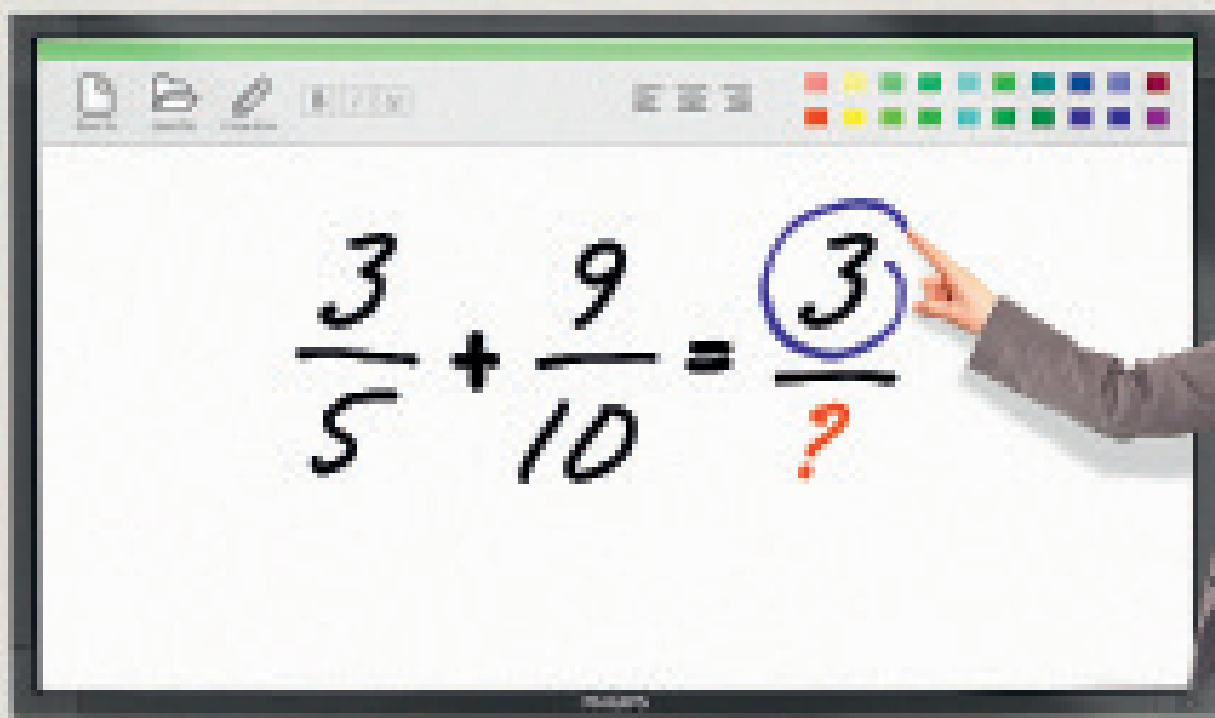
Our state-of-the-art LED panels create a seamless video wall in your control room. Without glass in front of the display, the ambient light reflection is zero, ensuring a crisp and bright image, even in brightly illuminated spaces. These displays have a relative low power consumption, a long life expectancy and are very robust, making them the way to go for 24/7 operation.

---

## Inform employees on the factory floor

A good way to motivate employees is by informing them about how well they're doing in real-time. You can do this using the internal network capabilities of the P-Line, powered by Android. The more employees know about manufacturing data and metrics, the more likely they are to meet established goals.





# Education

Students, teachers and visitors all need up-to-date information about where they need to be and how to get there. Professional Displays used as high-resolution whiteboards also add to the quality of education in colleges, schools and universities.

## Students and teachers can easily find their way

Provide your teachers and students with easy access to maps of the premises, information and recreational possibilities, class schedules and emergency messages on our multi-touch T-Line displays. And safety is not an issue with the T-Line either, thanks to anti-reflective, anti-glare security glass.

---

## Impress visitors when they enter reception

Impress and inform your visitors with a Signature display with Ambilight placed above your reception. It's perfect for showing the latest news and informing people about your site, schedules and events.

## High resolution interactive whiteboard

The true multi-touch T-line display turns into a high-resolution, interactive whiteboard with access to Android Apps. So instead of being limited to basic illustrations, you can show highly detailed images and run interactive videos and presentations without disturbing reflections and with low optical parallax. Simultaneously playing content from four separate Full-HD input is possible with QuadViewer in 4K Ultra-HD quality.

---

## Monitor and display classroom availability

Access to multiple classrooms and lecture halls is easily managed using a T-Line display at the entry door showing the room name, teacher or lecturer and class subject. If a class is not to be disturbed, the T-Line shows this using colored LED bars on the side of the display.



# Retail

Attracting customers to your retail location has become even more important in the face of on-line competition. Impressive in-store and shop window displays keep your visitors informed, and add an interactive dimension to shopping. And using our CMND platform, all your connected displays can be updated, and content can be created from one central location.





## Enticing and informative **shop windows**

Add an informative new dimension to your shop window and entice customers in to the store. Your window messaging can be viewed with excellent image quality at all times – even in bright daylight – with the UltraBright H-Line.

---

## Impressive **Video wall displays**

Impress your customers with the X-Line video wall with ultra-narrow bezel, advanced color calibration, high brightness and embedded processing power or use our state-of-the-art long-lasting and robust LED panels (L-Line) create a seamless video wall with zero ambient light reflection.

## Connected everywhere with **in-store displays**

Even in remote or complex locations, you can easily create signage networks using machine-to-machine communication with the 4G/LTE network option. The failover functionality available on most of our signage displays ensures content runs 24/7 by automatically playing content from another input if the main media player fails. As an added benefit, you can analyze your customer's interest by enabling real-time traffic measurement using the internal network capabilities of the D-Line, P-Line and T-Line (powered by Android).

---

# Food & Beverage

There's nothing more appetizing than high resolution images of today's specials to attract people into your establishment. Once they're in, you can show the full menu in glorious color. And entertaining the kids or showing sports events will keep them in even longer.

## The easy choice with **digital menu boards**

Make it possible to view high-quality and captivating images of your dishes, recipes, specials and promotions in portrait or landscape mode thanks to centralized content creation and management with CMND&Create. Guests can view the Professional Displays from almost any angle thanks to extra wide viewing angle of 178 degrees in both horizontal and vertical planes. And the failover functionality available on most of our Professional Displays ensures content runs 24/7 by automatically playing content from another input if the main media player fails. Affordable integration possibilities with third party signage solutions, stable and secure 24/7 operation, and ease of use with the Android powered D-line and P-Line.

## Captivate and entertain **in the sports bar**

Wow your guests with TV broadcasts in the sports bar. There's nothing else quite like our Signature TV with Ambilight to keep your visitors captivated and entertained. You can control all professional displays from one location with CMND&Control. And with the MediaSuite and Signature TVs powered by Android you have HEVC compatible solutions that can receive TV broadcast via an IP network, thus eliminating the need for a set-top box.

## Attract customers with **dynamic window displays**

There's a great way to lure potential customers into your venue with high-quality images of your food and beverages. The UltraBright H-Line displays are visible even in bright daylight.



**SMOOTHIES**

Banana	3.95
Blueberry	4.10
Strawberry	4.10
Green	3.60
Mango	4.10
Orange	3.95
Veggie	4.10



**SANDWICHES**

Beef	5.10
Cheese	4.40
Chicken	4.30
Tuna	4.60
Avocado	4.90
Turkey	4.95
Salmon	5.20







# Q-line

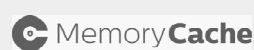
## Brilliant, high-contrast images with optional Ambilight

Superb image quality in a cost-efficient package. You can connect and control content via the cloud, and save and play from internal memory.



- 65"
- 55"
- 48"
- 43"
- 32"

> Better Product Better Features



\* Ambilight optional on 43", 48" and 55"

\*\* Failover available on 65"



# D-Line

## Low cost signage solution powered by Android

Ease of use, low cost integration and enhanced connectivity characterize this solution. FailOver ensures content stays up and running, and the optional 4G/LTE network feature allows operation in remote or complex locations.

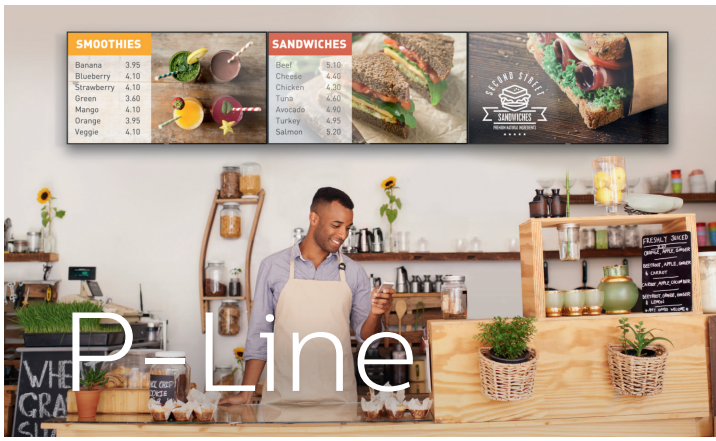


- 65"
- 55"
- 49"
- 43"
- 32"

> Better Product Better Features

Powered by **Android**

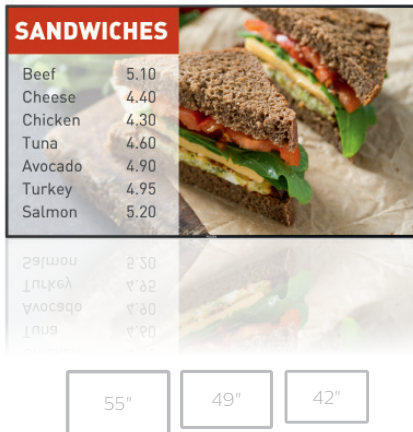




# P-Line

Public viewing with high brightness, vivid colors and powered by Android

The extra wide viewing angles make viewing comfortable in portrait and landscape modes. The slot for optional OPS-media player eliminates cables.



- 55"
- 49"
- 42"

## > Better Product Better Features

Powered by **Android**

- CMND**
- FailOver**
- WiFi\*\***
- Memory Cache**
- OPSInsert**
- SmartInsert\***
- SmartPower**
- Clinical D-Image**
- High Bright**

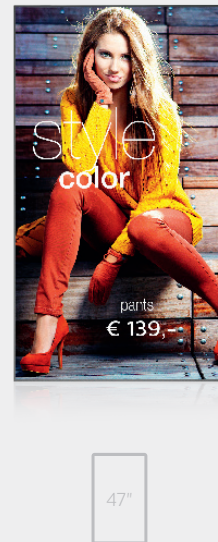
\* SmartInsert not available on 42"  
\*\* Optional WiFi available



# H-Line

Delivering ultra-bright, crystal clear images

Crystal clear images even in locations with high ambient light, and a slot for optional OPS-media player and failover for content continuity.



- 47"

## > Better Product Better Features

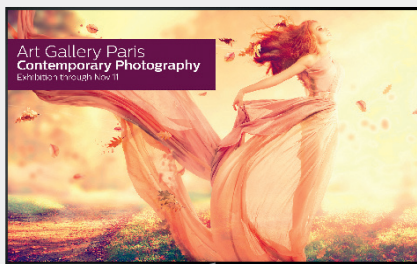
- UltraBright**
- CMND**
- FailOver**
- SmartPower**
- SmartInsert**
- OPSInsert**
- Clinical D-Image**



# U-line

## The ultimate Ultra-HD display experience

With four times the resolution of Full-HD, this display with QuadViewer can play content from four different inputs. The slot for optional OPS-media player eliminates cables.



- 98"
- 84"
- 75"

### > Better Product Better Features

- 4K ULTRAHD**
- SmartInsert**
- QuadViewer**
- OPSInsert**
- FailOver**
- CMND & CONTROL**
- SmartPower**



# X-Line

## Create an impressive narrow bezel video wall

With the ability to scale to any size, Ultra-HD resolution, and a vast amount of connectivity options, our video wall displays are adaptable to any market.



- 55"
- 49"

### > Better Product Better Features

- UltraNarrow Bezel**
- FailOver**
- Advanced Colour Calibration**
- OPSInsert**
- SmartPower**
- CMND & CONTROL**





# L-Line

## High-brightness LED displays for stable broadcasts

Create a robust and seamless video wall that doesn't get washed out by bright ambient light. The ultra-high refresh rate means stable and complete images.



55"

### > Better Product Better Features

- ZeroBezel**
- EasyInstall**
- SmallPixelPitch**
- HighBright**
- TrueBlack**
- CMND & CONTROL**
- 24h/7days**
- SmartPower**
- UltraHighRefreshRate**



# T-Line

## Multi-Touch interactive displays with security glass

Display solution with anti-reflective, anti-glare glass can run interactive videos and presentations without disturbing reflections and with low optical parallax.



84" 75" 65" 55" 43" 10"

### > Better Product Better Features

- Plug & Play Multi-Touch**
- FailOver\*\*\***
- 4K ULTRAHD\***
- OPSInsert\*\*\*\***
- QuadViewer\***
- SmartInsert\*\*\*\***
- Powered by **Android\*\***
- MemoryCache**
- CMND\*\***
- SmartPower**

\* 75" and 84" only      \*\*\* Failover not available on 10"  
 \*\* 10", 43", 55" and 65" only      \*\*\*\* 65", 75" and 84" only

